

SINCE *Vintage Air* 1976

*Steel-eez*

Bracket Systems

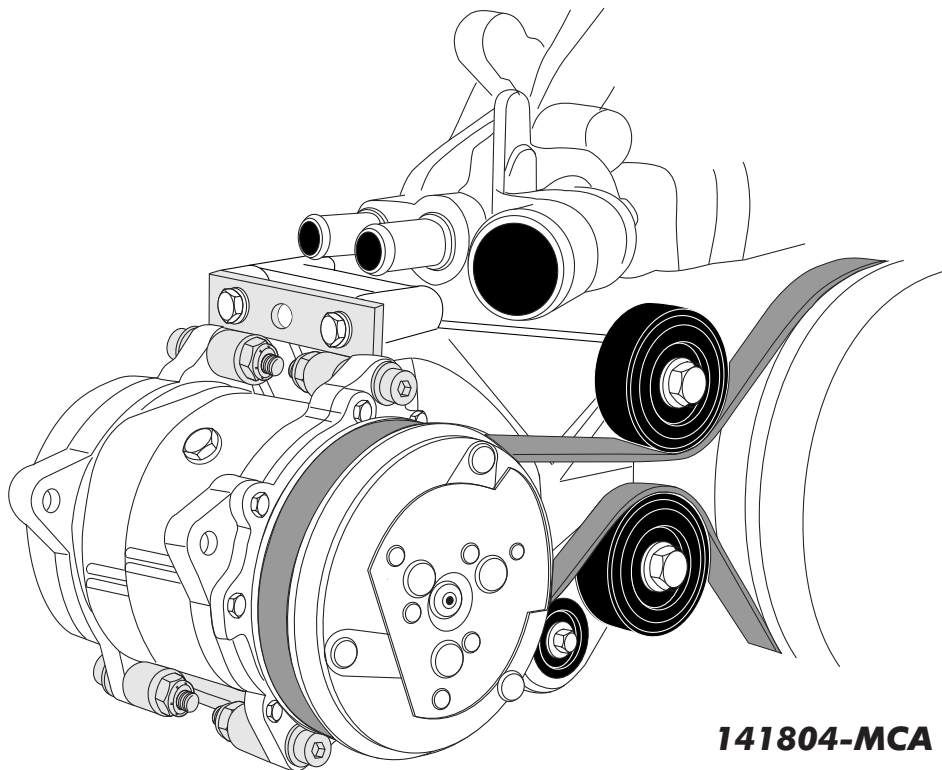
TM

**1998-2002**

# **CORVETTE**

LS 1/LS6 COMPRESSOR TO  
SANDEN COMPRESSOR CONVERSION

**(USES SANDEN 508 REAR EXIT COMPRESSOR)**



**141804-MCA**

18865 GOLL ST. - SAN ANTONIO, TX. - 78266 ph.210-654-7171 - fax 210-654-3113



## **Table of Contents**

PAGES

1. COVER
2. TABLE OF CONTENTS
3. PACKING LIST
4. BRACKET INSTALLATION
5. INSTALLATION CONTINUED
6. PACKING LIST

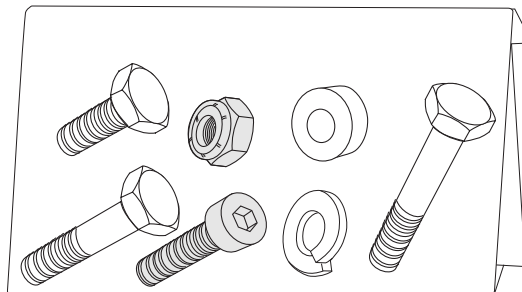
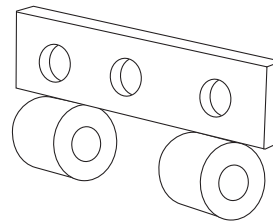
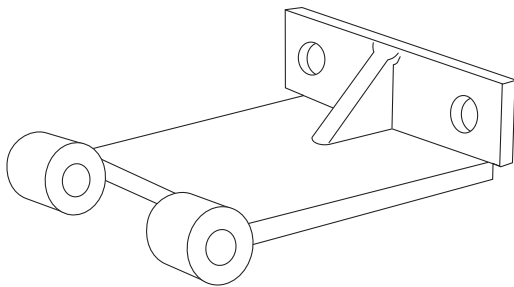


**1998-2002 LS 1 / LS 6 COMPRESSOR  
BRACKET CONVERSION KIT PACKING LIST**

**BRACKET KIT  
141804-MCA**

No.	QTY.	PART No.	DESCRIPTION
1.	1	141802-MCR	LOWER COMPRESSOR MNTG. BRKT.
2.	1	141803-MCR	UPPER COMPRESSOR MNTG. BRKT.
3.	1	199804-HCA	HARDWARE KIT

**\*\* BEFORE BEGINNING INSTALLATION, OPEN ALL PACKAGES AND CHECK CONTENTS OF SHIPMENT. PLEASE REPORT ANY SHORTAGES DIRECTLY TO VINTAGE AIR WITHIN 15 DAYS. AFTER 15 DAYS, VINTAGE AIR WILL NOT BE RESPONSIBLE FOR MISSING OR DAMAGED ITEMS.**

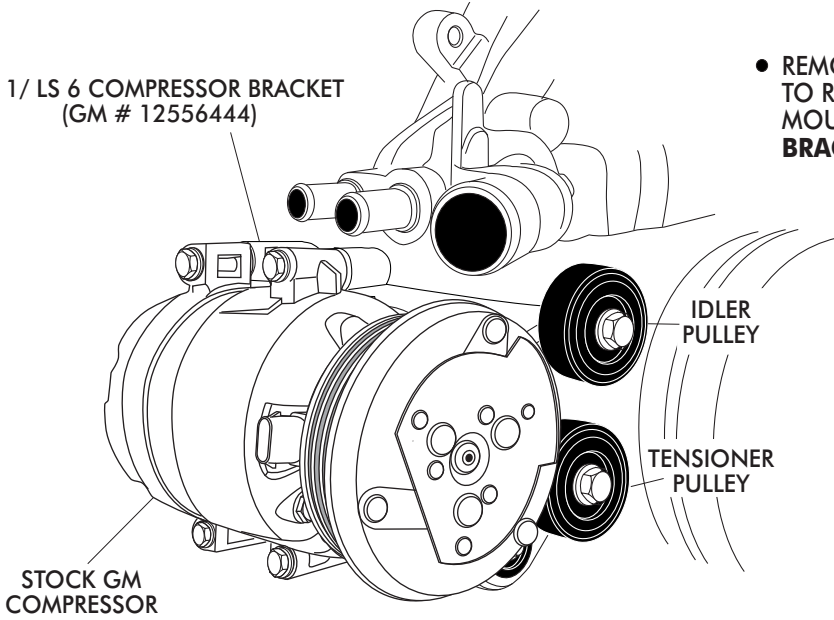




**1998-2002 COVETTE**  
**LS 1/ LS 6 COMPRESSOR TO**  
**SANDEN COMPRESSOR CONVERSION**  
**(MUST USE SANDEN 508 REAR EXIT COMPRESSOR)**

LS 1/ LS 6 COMPRESSOR BRACKET  
 (GM # 12556444)

- REMOVE STOCK GM COMPRESSOR AND HARDWARE TO REVEAL STOCK CORVETTE LS 1/LS 6 COMPRESSOR MOUNTING BRACKET. (NOTE: LS 1/ LS 6 COMPRESSOR BRACKET NOT INCLUDED WITH KIT.)



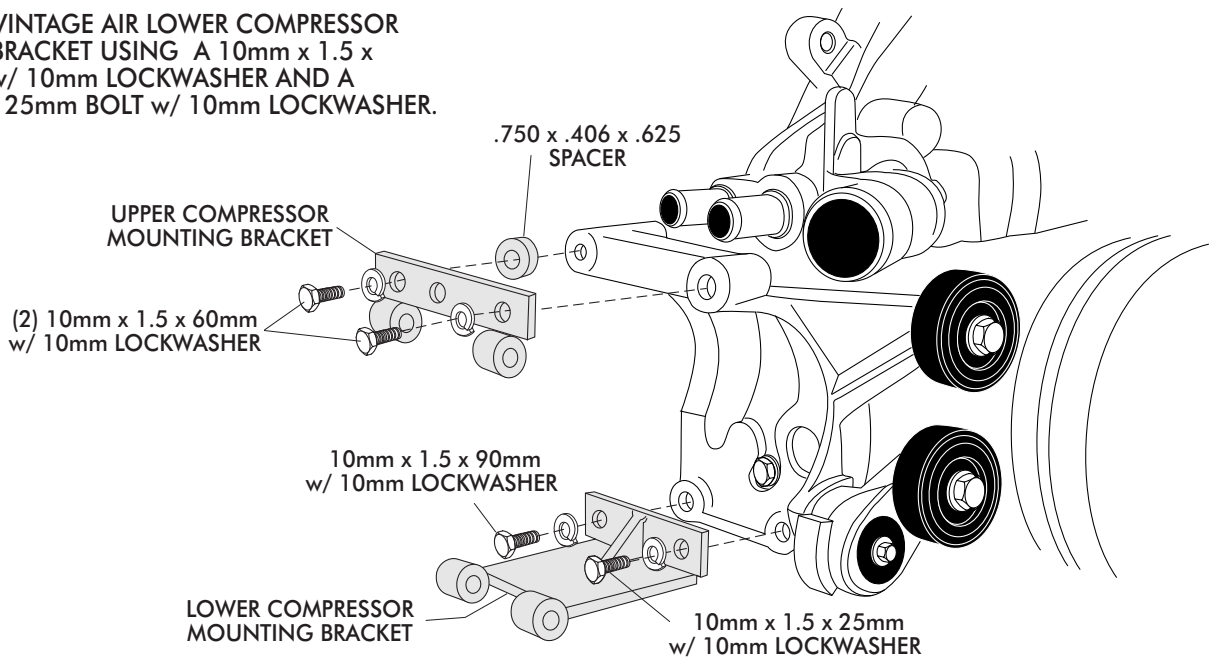
STOCK GM COMPRESSOR

IDLER PULLEY

TENSIONER PULLEY

**BRACKET INSTALLATION**

- INSTALL THE VINTAGE AIR UPPER COMPRESSOR MOUNTING BRACKET USING (2) 10mm x 1.5 x 60mm BOLT w/ 10mm LOCKWASHERS AND A .750 x .406 x .625 SPACER.
- INSTALL THE VINTAGE AIR LOWER COMPRESSOR MOUNTING BRACKET USING A 10mm x 1.5 x 90mm BOLT w/ 10mm LOCKWASHER AND A 10mm x 1.5 x 25mm BOLT w/ 10mm LOCKWASHER.



UPPER COMPRESSOR MOUNTING BRACKET

(2) 10mm x 1.5 x 60mm w/ 10mm LOCKWASHER

.750 x .406 x .625 SPACER

10mm x 1.5 x 90mm w/ 10mm LOCKWASHER

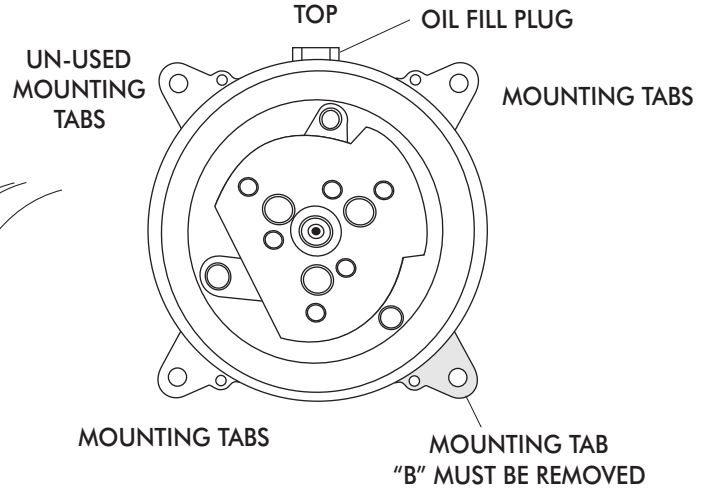
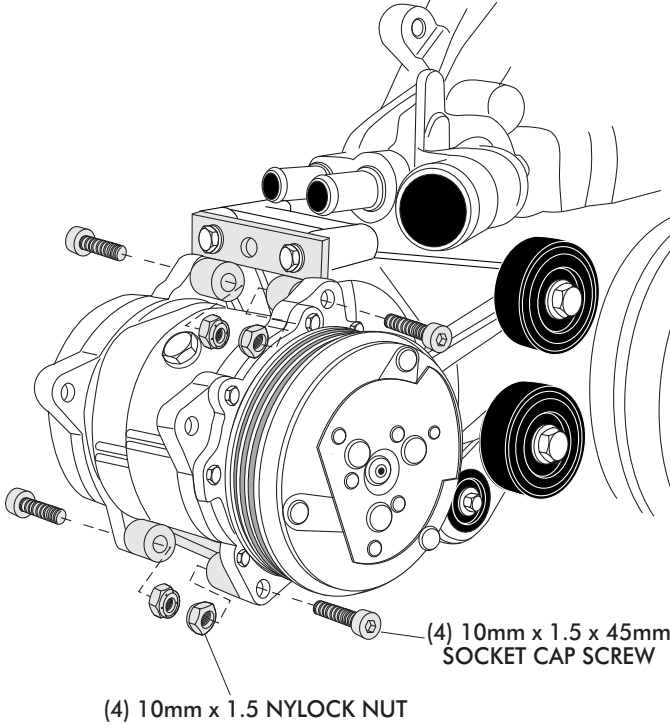
LOWER COMPRESSOR MOUNTING BRACKET

10mm x 1.5 x 25mm w/ 10mm LOCKWASHER



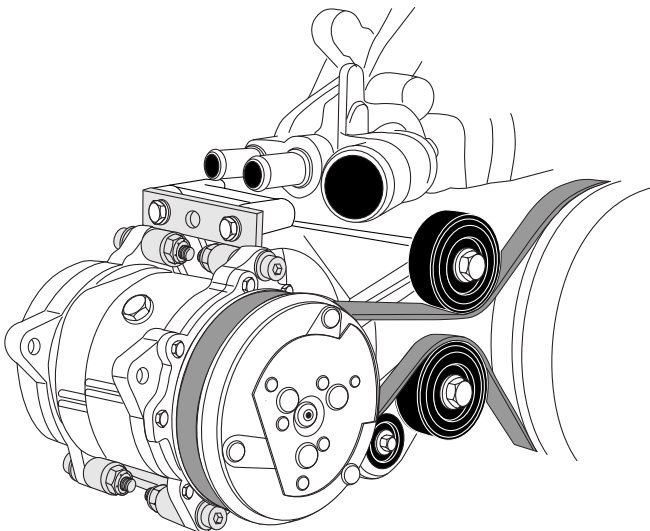
# LS 1 / LS 6 COMPRESSOR BRACKET CONVERSION KIT

## COMPRESSOR MODIFICATION/INSTALLATION



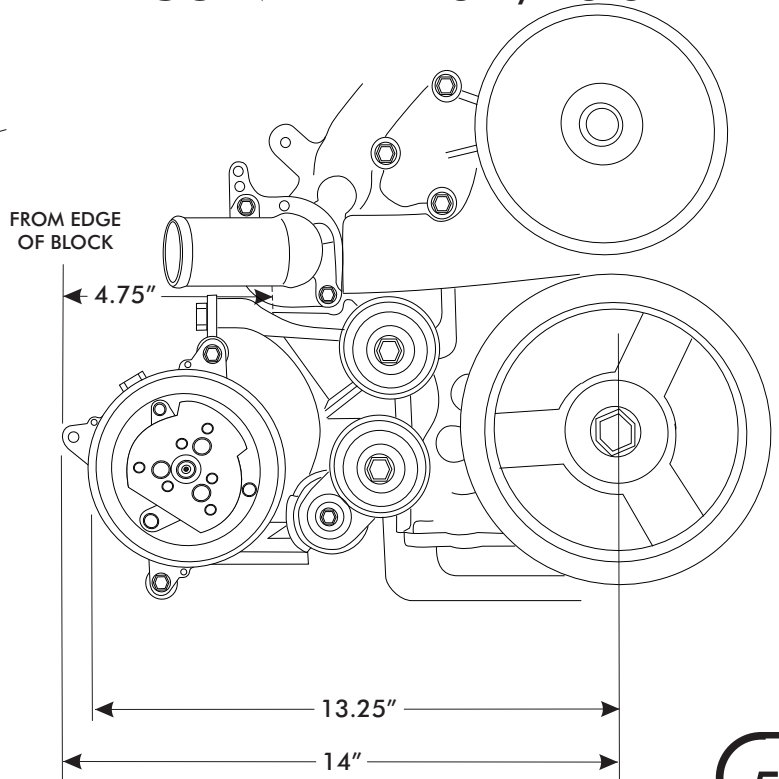
- INSTALL THE SANDEN 508 REAR EXIT COMPRESSOR USING (4) 10mm x 1.5 x 45mm SOCKET CAP SCREW AND 10mm x 1.5 NYLOCK NUT.
- NOTE: MOUNTING TAB "B" MUST BE CUT OFF IN SOME APPLICATIONS, UN-USED COMPRESSOR MOUNTING TABS MUST BE CUT OFF TO CLEAR FRAME OF VEHICLE .
- NOTE: OIL FILL PLUG MUST BE UP. (AS SHOWN)

## BELT INSTALLATION



- INSTALL BELT, CENTER THE BELT ON COMPRESSOR PULLEY. NOTE: ROUTE BELT OVER REAR PULLEY OF THE CRANKSHAFT PULLEY ASSEMBLY
- WE RECOMMEND A GOODYEAR 4-GROOVE BELT PART # 4040435 (BELT LENGTH 43.5")

## CORVETTE - LS 1/ LS 6





**1998-2002 LS 1/ LS 6 COMPRESSOR  
BRACKET CONVERSION KIT PACKING LIST**

**BRACKET KIT  
141804-MCA**

No.	QTY.	PART No.	DESCRIPTION
1.	1	141802-MCR	LOWER COMPRESSOR MNTG. BRKT.
2.	1	141803-MCR	UPPER COMPRESSOR MNTG. BRKT.
3.	1	199804-HCA	HARDWARE KIT

CHECKED BY: \_\_\_\_\_  
 PACKED BY: \_\_\_\_\_  
 DATE: \_\_\_\_\_

