

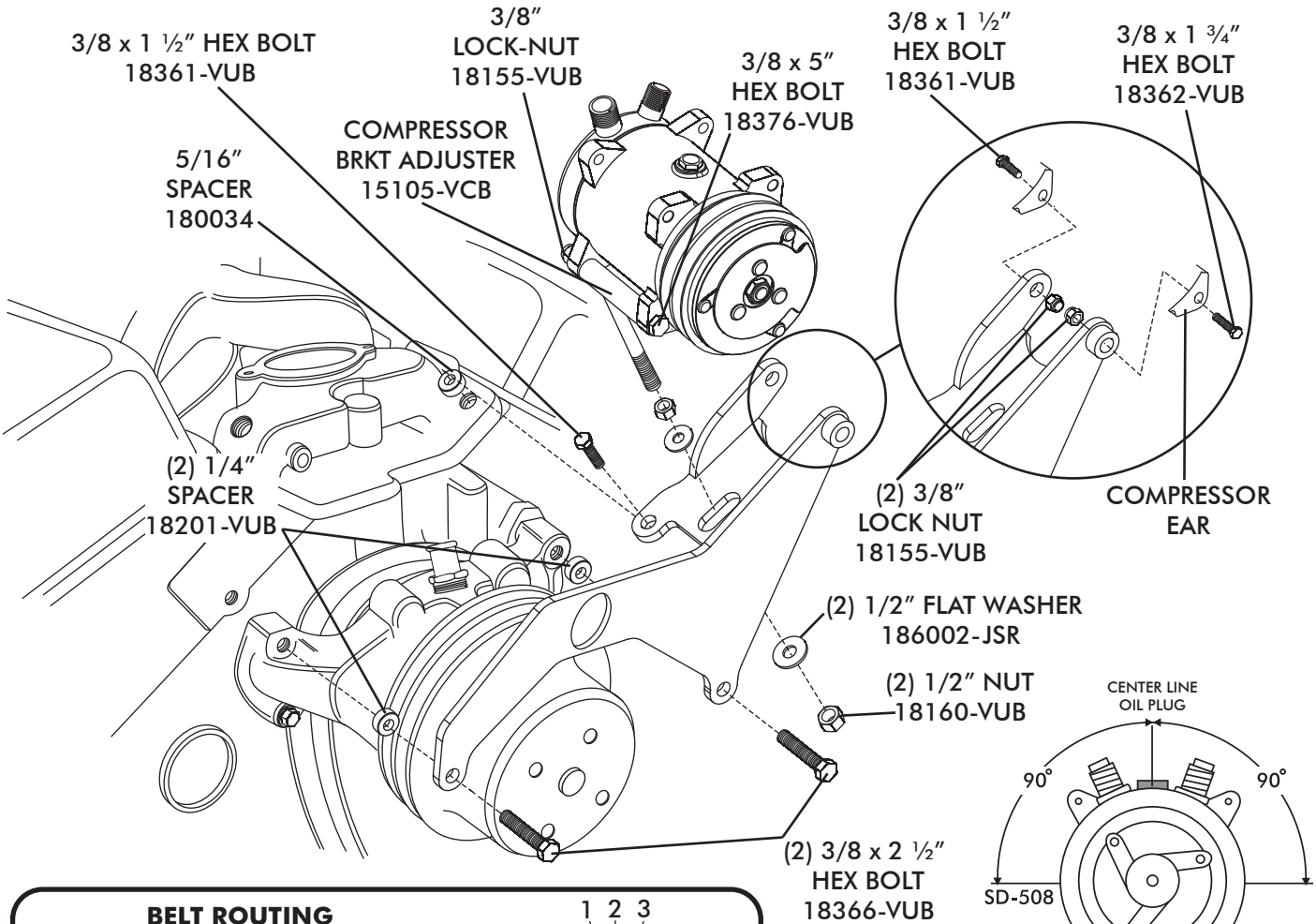


SBC LP A/C BRACKET DRIVER SIDE TOP MOUNT

COMPRESSOR MOUNTING BRACKET INSTALLATION

- REMOVE THE TOP (2) WATER PUMP MOUNTING BOLTS (DISCARD).
- REMOVE THE DRIVER SIDE FRONT INTAKE MOUNTING BOLT (DISCARD).
- INSTALL THE COMPRESSOR BRACKET AND COMPRESSOR AS SHOWN BELOW.

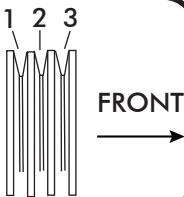
NOTE: START ALL MOUNTING BOLTS BEFORE TIGHTENING.



BELT ROUTING

CRANKSHAFT PULLEY GROOVES:

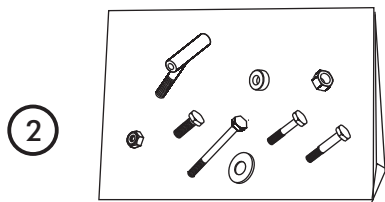
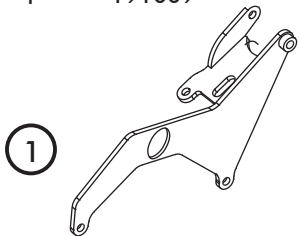
1. CRANKSHAFT & POWER STEERING
2. CRANKSHAFT, WATER PUMP & COMPRESSOR
3. CRANKSHAFT, WATER PUMP & ALTERNATOR



BRACKET KIT 15121-VCB

SBC LP A/C BRACKET DRIVER SIDE TOP MOUNT

No.	QTY.	PART No.	DESCRIPTION
1.	1	141108	BRACKET ASSEMBLY, SBC LP A/C DRIVER SIDE TOP MOUNT
2.	1	191009	HARDWARE KIT



CHECKED BY: _____
 PACKED BY: _____
 DATE: _____